

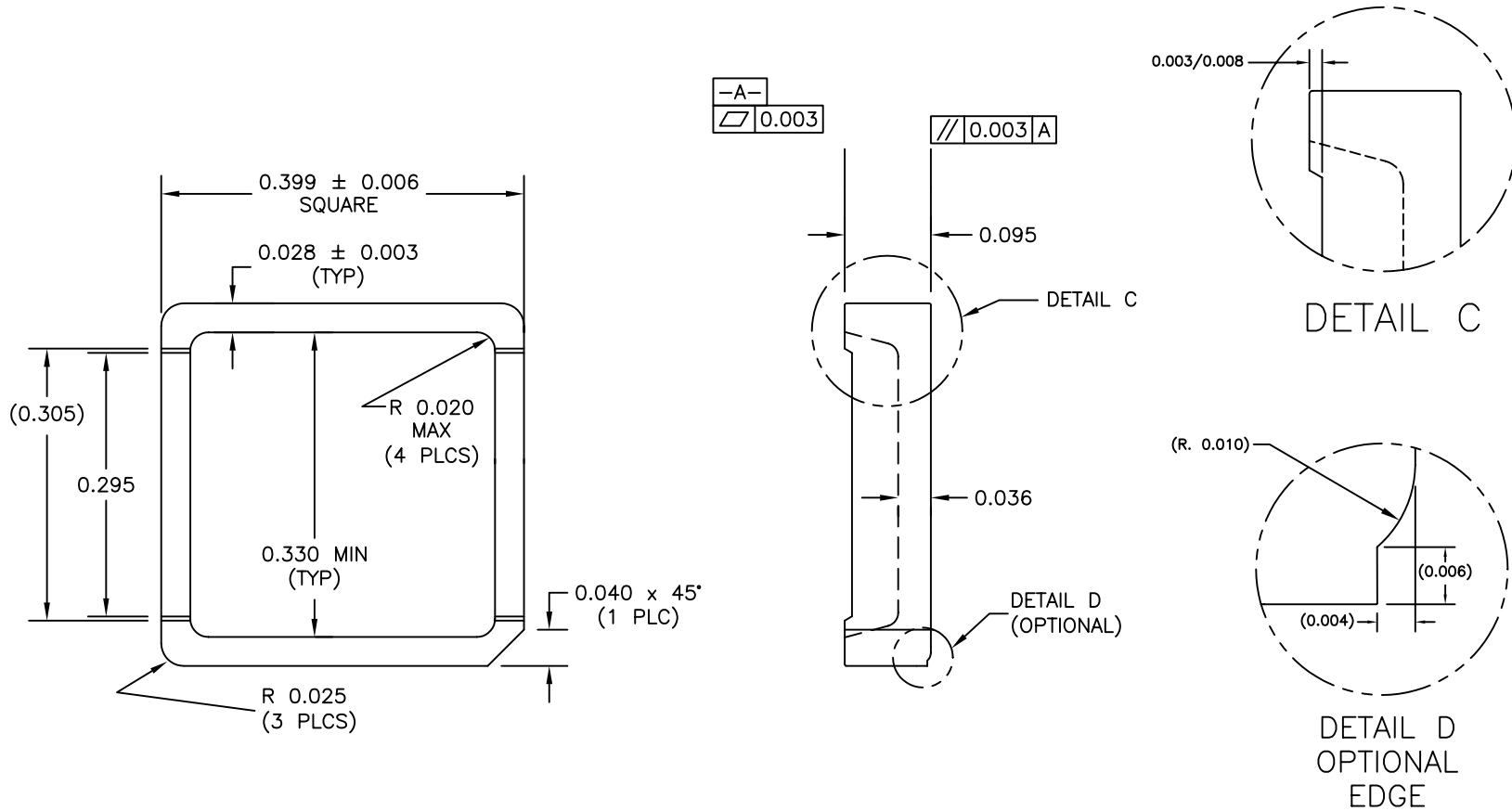
8 7 6 5 4 3 2 1

REQUEST FOR APPROVAL - UPON SIGNING, PLEASE RETURN SIGNED COPY TO RJR POLYMERS, INC.

APPROVED BY:

ON: / /

REVISIONS			
REV	BY	DESCRIPTION	DATE
A	BLYTH	RELEASED	10-09-00
B	BLYTH	INCORPORATED NOTCHED CORNER (1 PLC)	12-20-00
C	BLYTH	RELOCATED NOTCHED CORNER (1 PLC)	1-17-01



APPROVAL SIGNATURES	DATE
Configuration Control	
Purchasing	
Quality Assurance	



RJR POLYMERS, INC

7875 EDGEWATER DR., OAKLAND, CA. 94621
 THIS DRAWING CONTAINS INFORMATION THAT IS CONFIDENTIAL AND PROPRIETARY PROPERTY OF R.J.R. POLYMERS, INC., AND ITS DESIGN, DETAIL AND INVENTION, ARE THE PROPERTY OF R.J.R. POLYMERS, INC., SUBMITTED TO THE RECIPIENT IN CONFIDENCE AND SHALL NOT BE COPIED IN ANY MANNER NOR DISCLOSED TO ANY OUTSIDE PARTY WITHOUT THE EXPRESS WRITTEN CONSENT OF AN AUTHORIZED OFFICER OF THIS COMPANY. THEY SHALL BE USED EXCLUSIVELY FOR REFERENCE WORK ON CONTRACTS OR PROPOSALS SUBMITTED BY R.J.R. POLYMERS, INC. AND SHALL BE RETURNED FOR REQUEST. THIS DRAWING MUST BE KEPT ONLY IN THE CONFIDENTIAL FILES OF R.J.R. POLYMERS, INC., WHEN NOT IN USE. ALL RIGHTS RESERVED.

TOLERANCE UNLESS OTHERWISE SPECIFIED:

DECIMALS: X.X = ± 0.02
 DECIMALS: X.XX = ± 0.02
 DECIMALS: X.XXX = ± 0.005
 $// + \pm 1/32$ " / FT.
 $\leq \pm 1^\circ$
 $\square 0.003$ " / IN.
 DRAFT $\leq 15^\circ$ MAX.
 RADII: 0.015 MAX

DIMENSIONS ARE IN INCHES

CADFILE :
 Q:\DRAWINGS\PENDING\...4641B.DWG

0.400 Sq. x 0.095 x 0.028 (Wall)
 WHITE CERAMIC LID

CLIENT	DATE	SCALE	DRAWN BY	DWG SIZE	PART/DWG #	REV	1
	1-17-01	NTS	DWB	A	4641	C	1

8 7 6 5 4 3 2 1