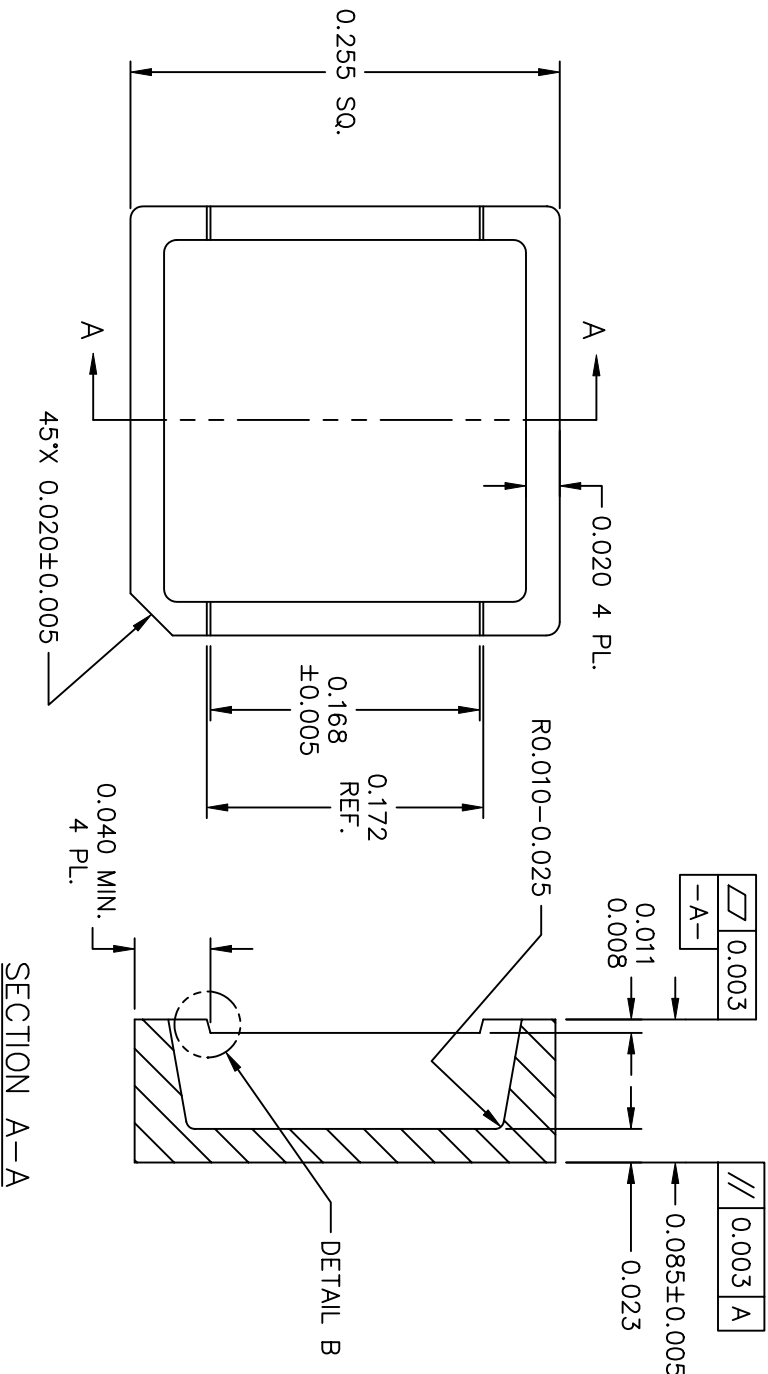


REQUEST FOR APPROVAL - UPON SIGNING, PLEASE RETURN SIGNED COPY TO RJR POLYMERS, INC.
APPROVED BY: _____ **ON:** ____/____/____

REVISIONS		DATE
REV	DESCRIPTION	DATE
A	GEIDEL RELEASED: CFM	5-31-01
B	GEIDEL CHG TO RJR PURCH LID / CREATE DWG	6-20-01
C	GEIDEL CHG CHAMFER LOC., LID HEIGHT, NOTCH DEPTH AND LENGTH PER CUST REQUEST	7-26-01
D	GEIDEL CHG CHAMFER LOC., LID HEIGHT	8-1-01
E	NAB ADD WALL THICKNESS (ECR 4909-030805)	8-5-03



APPROVAL SIGNATURES		DATE
Configuration Control		
Purchasing		
Quality Assurance		

RJR POLYMERS, INC
 7875 EDGEWATER DR., OAKLAND, CA. 94621
 THIS DRAWING CONTAINS INFORMATION THAT IS CONFIDENTIAL AND PROPRIETARY PROPERTY OF RJR POLYMERS, INC. AND ITS DESIGN, DETAIL AND INVENTION ARE THE PROPERTY OF RJR POLYMERS, INC. SUBMITTED TO THE RECIPIENT IN CONFIDENCE AND SHALL NOT BE COPIED IN ANY MANNER NOR DISCLOSED TO ANY OUTSIDE PARTY WITHOUT THE EXPRESS WRITTEN CONSENT OF AN AUTHORIZED OFFICER OF THIS COMPANY. THEY SHALL BE USED EXCLUSIVELY FOR REFERENCE. THIS DRAWING MUST BE KEPT ONLY IN THE CONFIDENTIAL FILES OF RJR POLYMERS, INC. WHEN NOT IN USE. ALL RIGHTS RESERVED.

TOLERANCES UNLESS OTHERWISE SPECIFIED:
 DECIMALS: XX = ±0.02
 DECIMALS: XXX = ±0.01
 DECIMALS: XXXX = ±0.003
 // ± 1/32" / FT.
 < ±2°
 ∠ 0.003" / IN.
 DRAFT < 3° MAX.
 RADII: 0.025 MAX.

DIMENSIONS ARE IN INCHES
 CAD FILE: Q:\DRAWINGS\...4909E.DWG
 CLIENT: 1124 DATE: 6-20-01

0.255 X 0.255 X 0.085
 WHITE CERAMIC NOTCHED LID
 WITH CORNER CHAMFER
 SCALE: DRAWN BY: DWG SIZE: PART/DWG # REV
 MTS: DMG A 4909 E 1 1