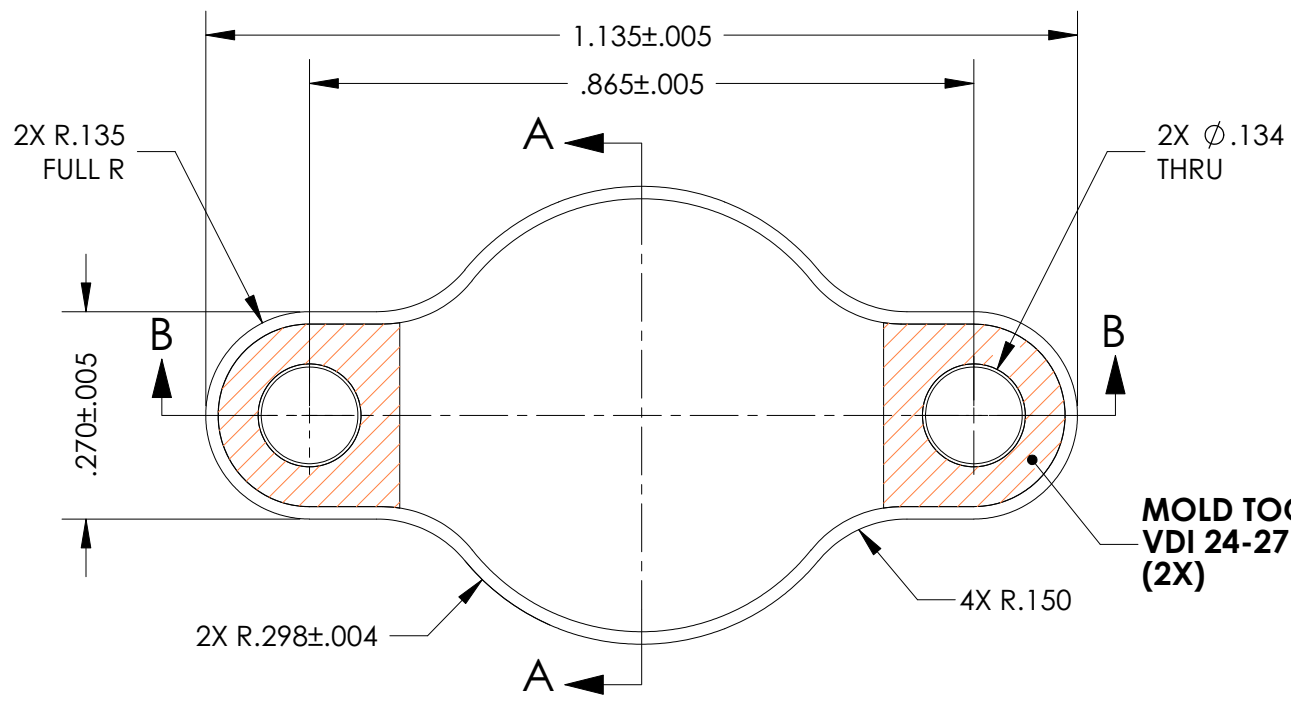
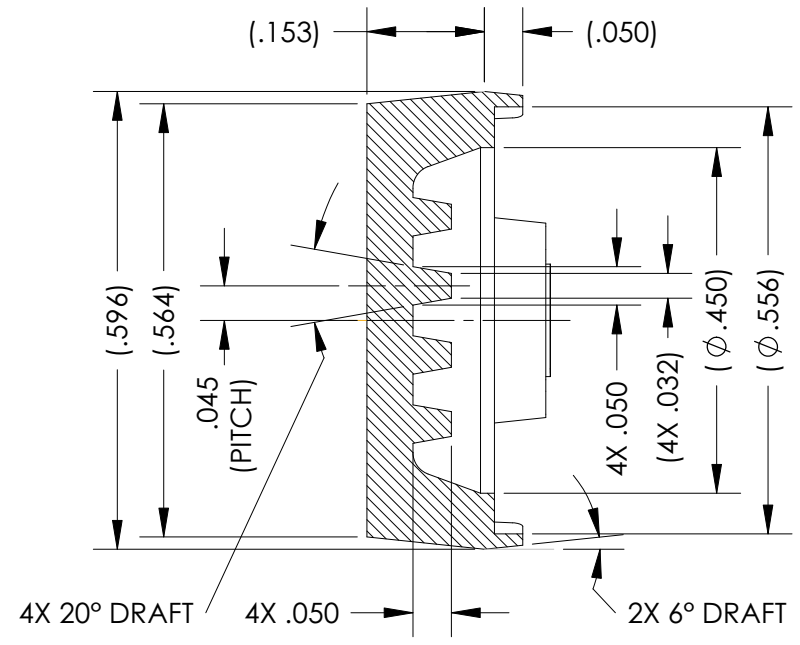


DRAWN	REV.	DESCRIPTION	DATE	APPROVED
N. LI	01	INITIAL RELEASE.	10-25-10	
D. LAM	02	UPDATED DWG DIM TO ACTUAL TOOLING SPECS	03-02-11	

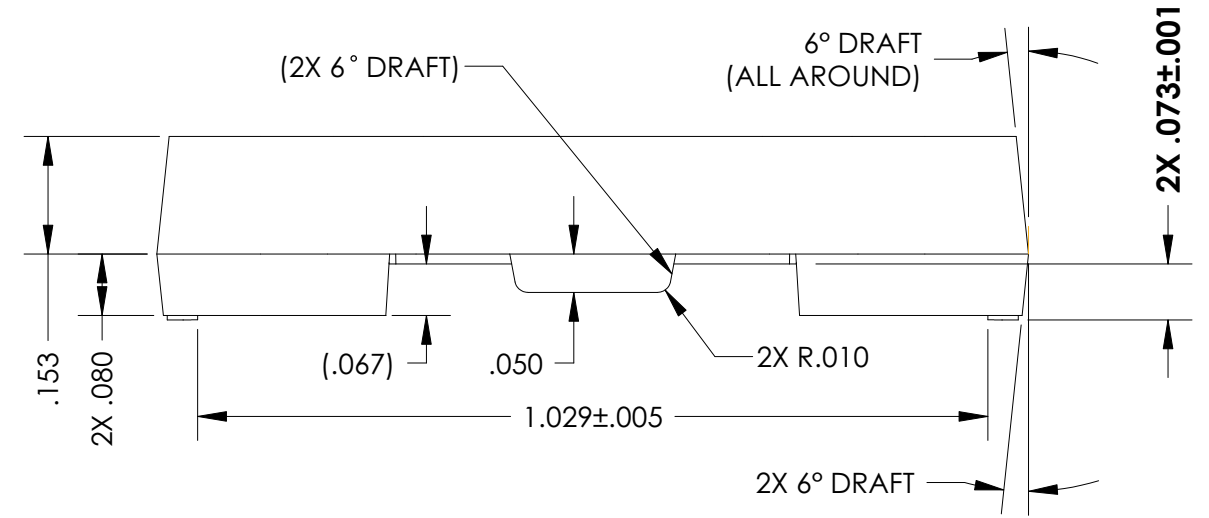


**TOP VIEW**

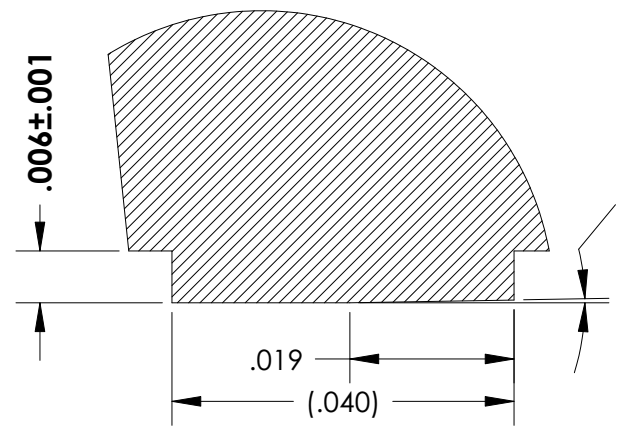
**MOLD TOOL SURFACE FINISH:  
VDI 24-27 (63-88 RA,u")  
(2X)**



**SECTION A-A**



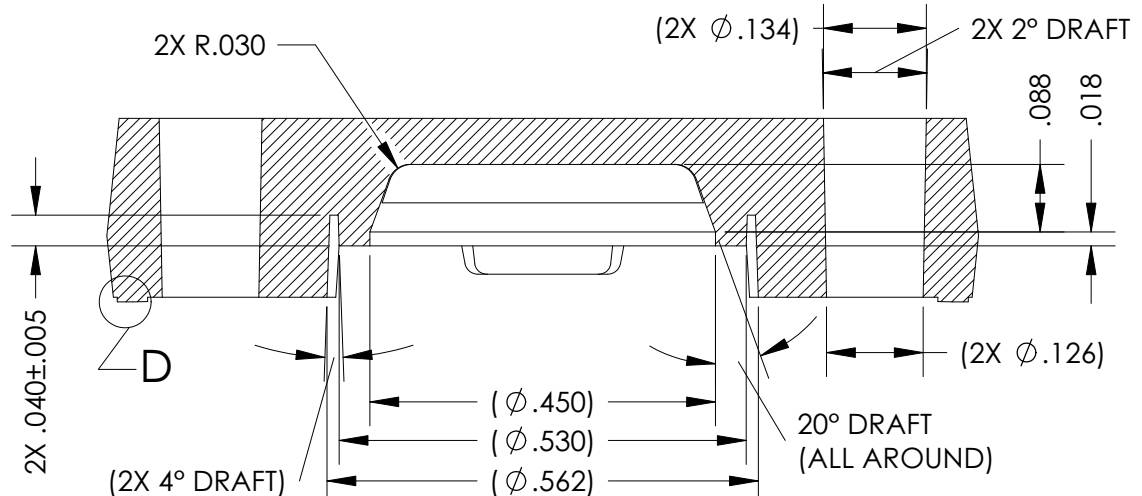
**SECTION B-B**



**DETAIL D**

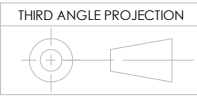
NOTES: UNLESS OTHERWISE SPECIFIED,

1. APPLICABLE STANDARDS/SPECIFICATIONS:  
ASME Y14.5M-1994, DIMENSIONING AND TOLERANCING  
ASME Y14.38-1999, ABBREVIATIONS AND ACRONYMS.
2. DIMENSIONS ARE SYMMETRICAL.
3. ALL EDGES AND CORNERS, R.010 MAX.
4. PARTS TO BE CLEAN AND FREE OF FOREIGN MATERIAL.
5. FLASH AND GATE VESTIGE NOT TO EXCEED .005".
6. DIMENSIONED TO VIRTUAL SHARP.
7. MOLD TOOL SURFACE FINISH FOR EPOXY SEAL  
SURFACE: VDI 24-27 (63-88 Ra, u").



**SECTION C-C**

**CONFIDENTIAL**



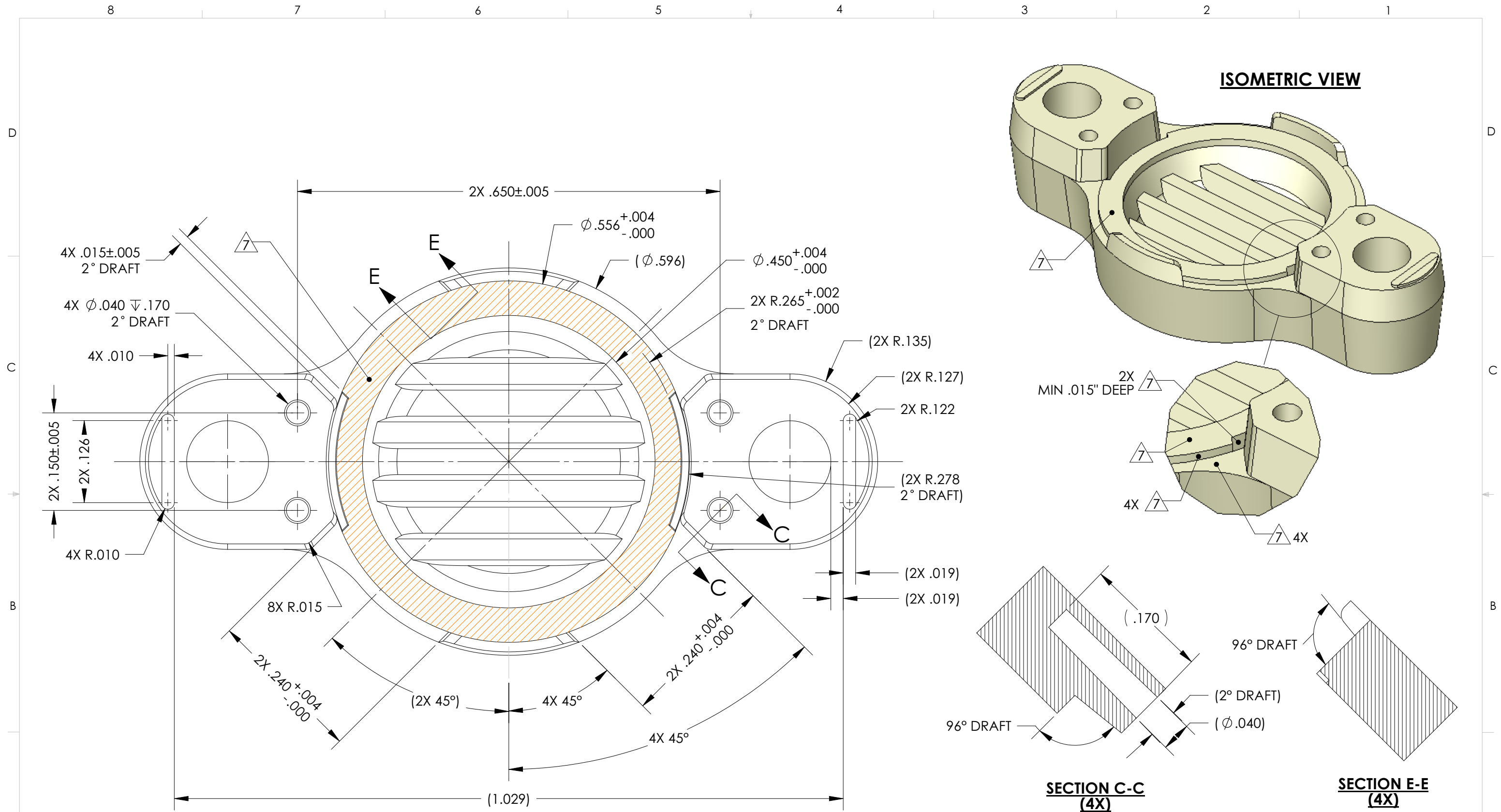
UNLESS OTHERWISE SPECIFIED:  
ALL DIMS IN INCHES & INCLUDE  
CHEM. APPLIED/PLATED FINISH.  
REMOVE BURRS & SHARP EDGES.  
DO NOT SCALE.

TOLERANCES:  
XX = ±.005  
XXX = ±.002  
ANGLES = ±1°



THIS DRAWING CONTAINS INFORMATION THAT IS CONFIDENTIAL AND PROPRIETARY PROPERTY OF R.J.R. POLYMERS, INC., AND ITS DESIGN, DETAIL AND INVENTION, ARE THE PROPERTY OF R.J.R. POLYMERS, INC., SUBMITTED TO THE RECIPIENT IN CONFIDENCE AND SHALL NOT BE COPIED IN ANY MANNER NOR DISCLOSED TO ANY OUTSIDE PARTY WITHOUT THE EXPRESS WRITTEN CONSENT OF AN AUTHORIZED OFFICER OF THIS COMPANY. THEY SHALL BE USED EXCLUSIVELY FOR REFERENCE WORK ON CONTRACTS OR PROPOSALS SUBMITTED BY R.J.R. POLYMERS, INC. AND SHALL BE RETURNED ON REQUEST. THIS DRAWING MUST BE KEPT ONLY IN THE CONFIDENTIAL FILES OF R.J.R. POLYMERS, INC., WHEN NOT IN USE. ALL RIGHTS RESERVED.

MATERIAL: HTP-1280 (NATURAL)	CAD FILE: 6564	<b>STAC177 LID</b>			
FINISH: -	CLIENT: -	DATE: 08-13-10	SCALE: NTS	SIZE: B	DRAWN: N. LI
CHK'D: -	P/N: 6564	REV: 02	PAGE: 1 of 2		



UNLESS OTHERWISE SPECIFIED:  
ALL DIMS IN INCHES & INCLUDE  
CHEM. APPLIED/PLATED FINISH.  
REMOVE BURRS & SHARP EDGES.  
DO NOT SCALE.

TOLERANCES:  
XX = ±.005  
XXX = ±.002  
ANGLES = ±1°

MATERIAL:  
HTP-1280 (NATURAL)

FINISH:  
-

THIRD ANGLE PROJECTION

THIS DRAWING CONTAINS INFORMATION THAT IS CONFIDENTIAL AND PROPRIETARY PROPERTY OF R.J.R. POLYMERS, INC., AND ITS DESIGN, DETAIL AND INVENTION, ARE THE PROPERTY OF R.J.R. POLYMERS, INC., SUBMITTED TO THE RECIPIENT IN CONFIDENCE AND SHALL NOT BE COPIED IN ANY MANNER NOR DISCLOSED TO ANY OUTSIDE PARTY WITHOUT THE EXPRESS WRITTEN CONSENT OF AN AUTHORIZED OFFICER OF THIS COMPANY. THEY SHALL BE USED EXCLUSIVELY FOR REFERENCE WORK ON CONTRACTS OR PROPOSALS SUBMITTED BY R.J.R. POLYMERS, INC. AND SHALL BE RETURNED ON REQUEST. THIS DRAWING MUST BE KEPT ONLY IN THE CONFIDENTIAL FILES OF R.J.R. POLYMERS, INC., WHEN NOT IN USE. ALL RIGHTS RESERVED.

**RJR POLYMERS, INC.**

CAD FILE: 6564

CLIENT: -

DATE: 08-13-10

SCALE: NTS

SIZE: B

DRAWN: N. LI

CHK'D: -

P/N: 6564

**STAC177 LID**

PAGE: 2 of 2

REV: 02